



## August 2017 NEWSLETTER

### message from our President

*Edi Collis*

Dear sisters,

It's hard to believe that the LWML convention in Albuquerque is a memory now! What an exciting time we had, and how wonderful it was to hear such inspirational speakers and select the new mission grants for the new biennium. It was certainly a faith-filled event! And what fun we had at the 75th Anniversary celebration! If you weren't able to attend, I hope you got to see the Livestream feed on the internet. You can find highlights on the LWML page ([www.lwml.org](http://www.lwml.org)) under the "Convention Central" tab.

Are you making plans to celebrate LWML Sunday with your congregation? Traditionally, this is observed on the first Sunday in October, but it can happen any time. Check out the resources available at [www.lwml.org/lwml-sunday](http://www.lwml.org/lwml-sunday). There is a new "About LWML" video that you might want to use that can be found at the bottom of the LWML Sunday page. (If you need instructions on how to download the video, you will find them below the video link.) This video can be shared anytime, not just LWML Sunday! It includes the new LWML logo, a summary of LWML missions supported, achievements, and how to get involved.

I hope you plan to join us at our Christian Life Retreat at the Carousel Hotel in Ocean City, MD on October 20-22. Our Bible study leader will be Deb Burma, and the theme is "Stepping Out: To Life on the Edge." It's going to be an inspirational and FUN weekend! More details can be found inside this issue of the *Breeze*.

Please mark your **2018** calendars for our Chesapeake District convention at the Richmond DoubleTree Hotel on September 21-23. Plans are still underway, but you won't want to miss it!

Have you seen the new 75th Anniversary Mite Box? Do you have one or do you have an earlier version? Whichever version you have, please keep filling it faithfully! We have been blessed to pay our first three mission grants for this biennium, but we have nine more to fund by the end of June 2018. Please keep all of the grant recipients in your prayers, and start thinking about possible mission grants for the 2018-2020 biennium. What sort of opportunities are within your congregation or your community? The guidelines for submitting grant proposals are on our District website at [www.lwmlchesapeake.org](http://www.lwmlchesapeake.org).

I feel so blessed to have all of you as my sisters in Christ, and I look forward to seeing many of you in October in Ocean City, Maryland.

### What's inside

**Reflections**  
page 2

**Mission Grants Update**  
page 3

**Remembering Helen Nations**  
page 4

**A Time To Celebrate**  
Page 5

**Convention Pictures!**  
Page 6

**Stepping**  
Page 7

**Stepping Out: To a Life on the Edge**  
Pages 7-10

**Nominations Needed for 2018**  
Pages 11-12



## Generosity Confirms Love in the Midst of Imperfection

During life, as in death, cherished values manifest in the objects of bounty we choose. Generosity confirms the value we place on people and things. A reliable barometer of devotion can be traced to the recipients of our generosity. Such an act affirms our allegiances.



In the events of the first family, God's Word records Adam's children's generosity towards God. Genesis 4:3-7 records, *"In the course of time Cain brought to the LORD an offering of the fruit of the ground, and Abel also brought of the firstborn of his flock and of their fat portions."* Notice the difference? One brought **the best**; one brought **some**.

The record continues, *"And the LORD had regard for Abel and his offering, but for Cain and his offering he had no regard. So Cain was very angry, and his face fell. The LORD said to Cain, 'Why are you angry, and why has your face fallen?' If you do well, will you not be accepted? And if you do not do well, sin is crouching at the door. Its desire is for you, but you must rule over it."* The next thing we are told is that Cain killed his brother Abel in jealous rage, while in the field.

It's remarkable to see that God's generosity was evident even in this tragedy. He restored the murderer to a life of increase. Adam and Eve were given another son, Seth. Scripture tells us that *"At that time people began to call upon the name of the LORD."*

The imperfect cycle began in Genesis and continues to this day. We live in a flawed world where disharmony is often the norm, and love is replaced by greed. Yet God's grace continues within us. We are made in His image. In that grace, we express generosity, aligned to our priorities. If you would like to talk with Linda Gage, LWML Gift Planner, contact her at 800-741-4138 or [lindagage.lwml@gmail.com](mailto:lindagage.lwml@gmail.com) or contact Marge Bruning at 804-798-6503 or [mabruning79@gmail.com](mailto:mabruning79@gmail.com).

Send your news and photos by November 15, 2017 to Linda Roscoe, Publications Editor

## from our

### Senior PASTORAL COUNSELOR

Rev. Dr. John Johnson

#### Reflections ...

As I can now envision the eventual ending of our summer swelter I again have cause to rejoice over the LWML. The convention in Albuquerque was wonderful and the mission grants for 2017-2019 are at an all time high.

Then even more impressive to me was the display of Christian joy when brothers and sisters waiting for the buses Thursday night sang hymns for well over an hour rather than complain about any inconvenience. Our Lord was truly honored by our witness and praise. The opportunity to talk with so many sisters in Christ at the convention center and hotel was great. The bonds we have in Jesus Christ under the encouragement of the Holy Spirit overcomes race, gender, socio-economics and everything else this world may use to separate and alienate.

My consistent prayer is that we each find a way to help young women to grow to appreciate the LWML. I honestly believe many women do not know what they are missing. I am personally convinced that our Synod is significantly stronger and more effective when our laymen and laywomen are supported, encouraged and acknowledged as essential parts of our Father's Kingdom.

As I look ahead the Retreat in October looks very exciting as well as fun. Then of course we'll all start preparing to make our 2018 Chesapeake District convention a memorable one. While I have this opportunity I just wish to share what an honor and joy it is to work with the women of our District. Your joy and love greatly bless me and all the pastors who have the opportunity to serve you as a District Counselor.

#### LWML's New Logo

A new LWML logo was unveiled in June at the national convention in Albuquerque, NM. Through this identity, the hope is to empower members through deeper connections, tradition, and the desire to serve God. The symbol was created with this in mind; one that represents the members of both the LWML and the church. A **heart** to represent the love and giving nature of the members; a **drop** to symbolize the blood of Christ; and a **cross** above all else to proudly show the purpose behind the efforts of the LWML.



## Chesapeake District LWML Mission Grants 2016-2018

*Biennium Mission Goal : \$115,000*

<b>Faith House, Frederick MD – Women’s Shelter Startup Costs</b>	<b>\$5,000</b>
--	----------------

Assist with start-up costs to renovate building to house homeless women & children

PAID IN FULL

<b>Animal Husbandry Classes for Women’s Protection Center in Nepal</b>	<b>\$4,950</b>
--	----------------

Provide classes & animals to give young women a self-supportive lifestyle

PAID IN FULL

<b>Establish the Bassa Community Health Center, District #3, Liberia</b>	<b>\$5,000</b>
--	----------------

Fund community health center in poorest district of Liberia devastated by ebola

PAID IN FULL

<b>Student Aid Grants for SED Students in Christian careers</b>	<b>\$5,000</b>
---	----------------

Provide scholarships to SED students pursuing careers in full-time church work

<b>Hot Meals capability, Redeemer’s Child Development Center in Richmond</b>	<b>\$5,000</b>
--	----------------

Assist with set-up costs to provide CDC children a hot meal daily

<b>Food For Haiti, Orphan Grain Train, Mid-Atlantic Region</b>	<b>\$5,000</b>
--	----------------

Add non-perishable food to shipping container of donations for people in Haiti

<b>Train Bible Translators in Southern Africa to Assist LBT Translators</b>	<b>\$5,000</b>
---	----------------

Equip nationals strong in local languages to work with LBT translators

<b>Prison &amp; Recovery Ministry, Grace Lutheran Church, LaPlata MD</b>	<b>\$4,000</b>
--	----------------

Produce video “When Did I Visit Jesus In Prison Or Invite Him In?”

<b>Bethesda Auxiliary – A prayer book for people with disabilities</b>	<b>\$3,000</b>
--	----------------

Publish & distribute “The Christ Connection” to reach people of all levels of disability

<b>Sharing the Love of Christ with Immigrants in Detention (LIRS)</b>	<b>\$5,000</b>
---	----------------

Spanish Bibles for those incarcerated by Immigration & Customs Enforcement

<b>Community Tuition Aid, Galilee Lutheran Preschool, Pasadena MD</b>	<b>\$2,500</b>
---	----------------

Aid local community to pay monthly tuition to send child to Christian preschool

<b>Lutheran Heritage Foundation Bible Storybooks for Asian Families</b>	<b>\$3,300</b>
---	----------------

Print Christian books for children in heart languages of Asian families



**2017-2019**  
**Mission Goal: \$2,075,000**

## Chesapeake District Special Gifts Fund

What better way to honor or remember a loved one than with a donation to Special Gifts? Funds are available for projects that are continuing or just getting started. The maximum amount that will be granted is \$300. In the past grants have been awarded for scholarships for Heart to Heart sisters to attend a Christian Life Retreat, for study of educating Muslims about Christ, for help with Pastor's Wives conference and support for Gifts of Love ambassadors. See the website for application procedure and form.

Make checks payable to:  
Lutheran Church Extension Fund *with*  
"LWML Special Gifts" on memo line. Mail to:  
Sandy O'Hedy  
116 S. School Lane  
Smyrna, DE 19977

Given by: \_\_\_\_\_

Amount \_\_\_\_\_

In Memory of or in Honor of:

\_\_\_\_\_

Occasion \_\_\_\_\_

Send acknowledgement of gift to:  
(please print plainly)

Name \_\_\_\_\_

Address

\_\_\_\_\_

**Special Gifts Fund** has \$4,123.40 as of the July 31.

*Recent donation for memorials are for:*  
Marjorie Reid by Barbara Wagner

We have transferred \$2,000 from the CD which was reaching maturity to the Stewardship account, leaving the Special Gifts account still with a CD of \$15,000.

## Remembering Helen Nations

May 4, 1918 – July 28, 2016

*by Lavonne Harrell*

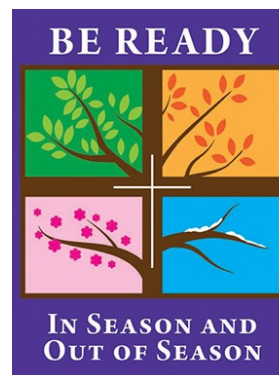
A combined total of \$1,000 for Mites from friends and family and a special door offering on LWML Sunday in October 2016 was given in memory of Helen Nations who went home to Jesus on July 28, 2016 at the age of 98.

Helen was introduced to the Lutheran Women's Missionary League (LWML) at the age of 35 when she was invited to attend a LWML event at Camp Arcadia in Michigan. She remained dedicated to the LWML and serving the Lord with gladness in various positions and capacities for over 60 years.

When the society at Peace Lutheran, King George, VA became inactive she chose to remain involved as an individual. In 1992, she asked me to attend a Spring Rally with her. The same year fellow Peace member, Tom Moffitt, suggested re-activating Peace's society, knowing her commitment to the LWML. She proudly served as society President and Networker.

Over the years, we traveled to Zone Spring Rallies and Fall Workshops, District Conventions, Christian Life Retreats, and attended two National Conventions, one in Charlotte, NC and the other in San Jose, CA. Helen sang in the choir at all the events, the last couple of times from a wheel chair. She totally loved the songs sung during the conventions and retreats. She sang in Peace's choir until the age of about 95, making the trek from Fredericksburg to King George Tuesday evenings for choir practice.

Helen without a doubt is serving her Lord with gladness by singing in the heavenly choir for eternity.



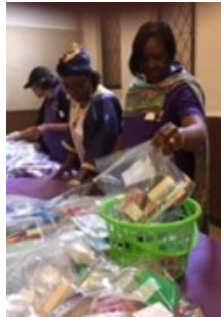
LWML Sunday 2017 — More details at [lwml.org](http://lwml.org)



## "A Time to Celebrate"



The Candace Ladies from Mount Olivet Lutheran Church hosted the DCMarVa Zone Spring Rally on Saturday, April 29. At this gathering we had time to *Engage, Encourage, Equip and Enjoy* under the theme: "A Time to Celebrate." Our ingathering gift was to provide toiletries for the Blessing Bags given to the women of N Street Village (in Washington, D.C.). This was very successful ingathering of Blessing Bags (women's toiletries) that the ladies were able to prepare that day and Rev. Dr. John Johnson blessed during the worship service. The following week, the Candace Ladies delivered three shopping carts of bags.



DCMarVa Zone is so blessed we have received two new churches: Lamb of God Lutheran and Zion Praise Tabernacle Lutheran Mission. At this gathering we received many blessings as Peace Lutheran, King George, VA gave a donation of \$1,000 for Mites in memory of a faithful LWML supporter, Helen Nations. The District Representative was Christine Maconachy, VP Christian Life, who provided us with an update on the Mission Goals and the upcoming Christian Life Retreat. The special speaker was Pastor Tim McNutt and his wife, Amy who gave a presentation on their mission trip to Africa.

To assist the DCMarVa Zone delegate with her mission grant choices, each church was asked to bring their selections to the meeting. The choices of the top eight were provided to our delegate and the list was given to each congregation to lift in prayer before the national convention in Albuquerque, NM.

Our Fall Workshop will be Saturday, September 16 at Lutheran Church of Our Savior, Bryans Road under the theme: "Order our steps as we celebrate the goodness of God."

*Submitted by Yvonne Brown, DCMarVa Chair*



## Convention Pics from Albuquerque



## from our VP of Christian Life

Christine Maconachy

Stepping on toes. Stepping out of your comfort zone. Stepping in the Light.

Search the internet for famous quotes using the word “step” and you will be overwhelmed, mulling over simple phrases from the Bible, famous people, famous literary works and how everyone can overcome anything, just by taking a *step in the right direction*.

- *Faith is taking the first step even when you don't see the whole staircase.* (Martin Luther King, Jr.)
- *You cannot step into the same river twice.* (Heraclitus)
- *When you step on the brakes your life is in your foot's hands.* (George Carlin-Just what does this mean exactly?)

*Small steps, baby steps, first steps.....*

Deb Burma will be leading us with humor, insight, His Word, and faith to explore how we can become unstuck in our struggles, fears and worries, by “Stepping out to a life on the edge.” Praying all of you can join us at Ocean City with Deb Burma in October.

Until then, search the [lwml.org](http://lwml.org) website. There are so many resources to explore which can be helpful. Did you know you can sign up for daily LWML Mustard Seed Devotions that arrive via your email early in the morning? The devotions take just a few minutes to read. From there, you can step out in all directions! You could use the devotions to point you to passages in the Bible to read, reflect and be nourished. You could forward the devotion to family, friends or shut-ins, who might need the Grace that devotion's thought for the day offers. You could use them as an opening to your LWML meeting or other gatherings. If you have trouble signing up, contact me at [clmacon@aol.com](mailto:clmacon@aol.com) and I will be glad to forward the daily devotions to you. We could pray together through emails, and become daily prayer warriors.

One of my favorite quotes of all my “step” searches is: *Start with God - the first step in learning is bowing down to God; only fools thumb their noses at such wisdom and learning.* King Solomon

## Stepping Out Mission Walk at the Christian Life Retreat in October

Stepping Out Mission Walk will be held on Saturday from 2:45-4:00 pm. This will give those attending and our sisters and brothers in Christ at home a chance to support our District Mite Projects by pledging to be a **Courageous Walker**! Use the form below to obtain pledges/donations from friends and family. All monies collected will go to the Chesapeake District Mite Projects. Check should be payable to LWML Chesapeake District with “Walk for Mites” in the memo. So pack your walking shoes and join us at the Carousel Resort Hotel in Ocean City October 20–22. *Make extra copies if needed.*

Your Name \_\_\_\_\_

Congregation \_\_\_\_\_



### Pledges for “Life in the Mission” Mite Walk

Name | Amount pledged

1. \_\_\_\_\_
2. \_\_\_\_\_
3. \_\_\_\_\_
4. \_\_\_\_\_
5. \_\_\_\_\_

Name | Amount pledged

6. \_\_\_\_\_
7. \_\_\_\_\_
8. \_\_\_\_\_
9. \_\_\_\_\_
10. \_\_\_\_\_

Total donations \_\_\_\_\_





## "Stepping Out: To Life on the Edge"

LWML Chesapeake District Christian Life Retreat

October 20-22, 2017

Ocean City, MD

**Bible Study Leader Deb Burma** has a passion for sharing Christ's redeeming love in a creative, engaging style, touching the hearts of women, meeting them in the moments of their everyday lives, and engaging them in God's word. She travels extensively as a leader and guest speaker for women's retreats, conferences, and other ministry events.

### Christian Life Retreat Schedule

#### Friday, October 20, 2017

Resource area open 4:00-7:00 pm

7:15 pm Gathering Music  
7:30 pm Opening Worship with Communion  
Welcome & Introductions  
8:45 pm Bible Study Session 1  
Announcements  
9:45 pm Meet & Greet Fellowship

#### Saturday, October 21, 2017

Resource area open 8:30 -9:30 am

8:30 am Breakfast on your own  
9:30 am Gathering Music  
9:45 am Mission updates  
10:00 am Bible Study Session 2  
11:15 am Bible Study Session 3

12:00 pm Lunch – Resource area open  
1:15 pm Gathering Music  
1:30 pm Dedication of Gifts of the Heart  
Bible Study Session 4  
2:30 pm FREE TIME -- ENJOY!  
2:45 pm Pledge Walk for Mites  
Craft and Servant projects  
4:30 pm Last Call for M&M Store  
5:30 pm Dinner  
7:00 pm Entertainment  
9:00 pm Zone Gatherings and Fellowship

#### Sunday, October 22, 2017

8:00 am Breakfast on Own  
9:00 am Gathering Music  
9:15 am Bible Study Session 5  
10:30 am Praise and Worship Service  
Noon Departure

**BRING A ROCK.** "*Kindness Rocks*" is a movement that encourages people to decorate rocks with inspirational messages and leave them in random public places for people to find. What a lovely idea, right? These rocks with messages of kindness are left where people may see and TAKE ONE FOR INSPIRATION or SHARE ONE FOR MOTIVATION. This is an easy way to not just share kind words, but also scripture. For those interested, you can paint rocks during the Saturday free time and place them around Ocean City or take your rocks home and place around your church or in your community. This also is a great project for your neighborhood. We look forward to seeing pictures of your rocks!







**"Stepping Out: To Life on the Edge"**  
**LWML Chesapeake District Christian Life Retreat**  
**October 20-22, 2017**  
**Bible Study Leader: Deb Burma**

**Carousel Resort Hotel**  
118<sup>th</sup> Street on the Ocean  
11700 Coastal Highway  
Ocean City, MD 21842  
<http://carouselhotel.com/>

Rooms are \$99 (Oceanfront) and \$89 (Non-Oceanfront) per room night + tax.  
Rooms can accommodate up to 4. Two bedroom condos are \$185 per night.  
Make your room reservations directly with the Carousel Hotel at 1-800-641-0011.  
Tell them you are with the Chesapeake District LWML to get the special room rate.  
**Room reservations deadline is September 20, 2017**

Registration fee of \$100 includes all sessions, Friday night reception, Saturday lunch and dinner,  
and entertainment on Saturday night by Salt and Light Ministries.

***Note: You are on your own for Friday dinner and Saturday/Sunday breakfast.***

***Registration deadline is September 20, 2017***

See reverse side for "What to Bring" and weekend details

Contact: Christine Maconachy,  
VP Christian Life  
clmacon@aol.com  
410-969-4466

Teresa Tester,  
Christian Life Committee Chair  
ttester9612@verizon.net  
210-240-3247

\*\*\*\*\* Registration Form – Cut Here \*\*\*\*\*

Mail this registration form with a check for \$100 made payable to **"Chesapeake District LWML"** to:  
**Linda Nau, 1810 Ethelred Ct, Midlothian, VA 23113**

*Note: If a check is returned the individual who wrote it will be charged the bank fees*

Name \_\_\_\_\_

Address \_\_\_\_\_

Email \_\_\_\_\_ Phone \_\_\_\_\_

LWML Zone \_\_\_\_\_ Church Name & City \_\_\_\_\_

Special Diet Needs: No \_\_\_\_\_ Yes \_\_\_\_\_ Specify \_\_\_\_\_

Interested in the "Stepping Out Mission MITE Walk?" Yes \_\_\_\_\_ No \_\_\_\_\_ Maybe \_\_\_\_\_

Can you help with one of the following?

Registration \_\_\_\_\_ Greeters \_\_\_\_\_ Ushers \_\_\_\_\_ M&M Store \_\_\_\_\_ as Needed \_\_\_\_\_ *Thank you!*

## Hotel Details

**Hotel Check-in:** 4:00 pm

**Reservations:** Everyone should contact the Carousel directly (800-641-001) and request the Chesapeake District LWML room block to receive the correct room rate (\$99 or \$89 plus tax). All reservations must be guaranteed with an advance deposit equal to the first night's lodging. Room reservation changes or cancellations are accepted up to 72 hours prior to arrival date.

**Restaurants:** It's Ocean City! These are so many dining options. The hotel has two restaurants: the Seasons Oceanfront Restaurant, and The Bistro.

**Amenities:** All rooms have a kitchenette with mini fridge, microwave and coffee maker.

## Retreat Details:

**What to wear:** It is a beach weekend...come casual and comfortable...but remember it is October.

**Bring:** Your Bible, comfortable walking shoes, and your checkbook or credit card to purchase great items at the M&M (Mission and Mites) LWML store.

### Gifts From the Heart:

- Gift cards for seminarians
- Toiletries and nonperishable food items for Open Kettle, St. Peter's Lutheran Church, Ocean City, MD
- Flip flops and new underwear for the Orphan Grain Train shipments

**Offerings:** 1) Friday evening worship will go to Chesapeake District Mites  
2) Sunday morning worship will go to (TBD)

### Saturday Night Entertainment:

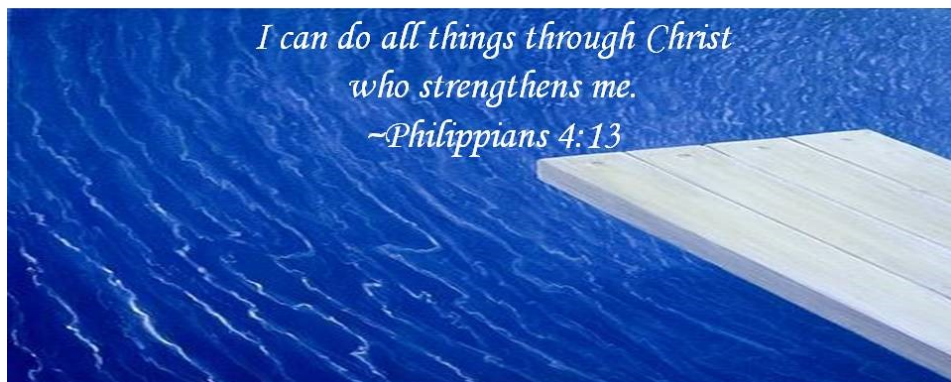
Salt and Light Ministries — *Encouraging the Body of believers by bringing the Bible to life.*

### Life in the Mission Walk Pledge for Mites:

Saturday afternoon from 2:45-4:00 pm. Enjoy a casual walk with your LWML sisters. Use the pledge form on page 7 to get sponsors that are not able to participate. All funds will go to Chesapeake District Mite Projects.

**M&M Store** will be open until 4:30 pm Saturday.

**Registration form on other side.**



## Seeking Nominations for Chesapeake District Offices

We are asking your assistance in providing recommendations for the leadership of the Chesapeake District LWML for the 2018-2020 biennium. We are in the process of assembling the candidates for the ballot that will be presented at the District Convention in Richmond, VA, September 21-23, 2018. Nominations are being requested for the offices below (with brief descriptions):

**District President:** member of national LWML Board of Directors, provide leadership and coordination for the District, write Chesapeake Breeze articles, assist inactive societies and new groups, review all contracts, lead Executive Committee and Board of Directors meetings.

**VP of Communications:** oversee all work within the District on presentations, hard copy and electronic means to promote the LWML and its mission and to encourage others to do the same. In charge of the display rooms at the District convention and promote the District LWML at Pastor's and professional church workers conferences, South-eastern District conventions and at group meetings. Attend the LWML assembly of Leaders meetings when they are held.

**VP of Human Care:** select and oversee Gifts from the Heart projects for all District gatherings, become aware and inform zones about opportunities and challenges to provide human care, write articles for Chesapeake Breeze, assist with planning District Leader's weekend.

**Recording Secretary:** take, transcribe and distribute minutes of all District meetings, work closely with the President.

**Financial Secretary:** mail Mite box notices on a quarterly basis; receive, record and deposit all monies for the District, maintain financial records.

**Zone Liaison:** serve as a contact between the Executive Committee and the Zone Chairmen, maintain list of all societies and zones within the District, and maintain statistical records.

**Pastoral Counselor:** responsible for Bible study at District conventions, attends national LWML convention, proclaimer for worship service at District convention, plan and present Bible studies, and devotions as requested, write a Pastor's Message for the Chesapeake Breeze every other quarter, and assist in an advisory capacity.

Please prayerfully consider women who have previously served or currently are serving in society, zone or district leadership positions for these offices.

- Submit their name for nomination on the enclosed form (see back of this page) before **March 1, 2018**.
- Give brief description of the individual's gifts and talents as they relate to the position.
- The nominating committee will contact them and provide more information about the position and its responsibilities.

*How about you?* If you feel called to serve the Lord at the District level, you may submit your own name for nomination and give a synopsis of your gifts and talents as they relate to the office.

Send nominations to a member of the Nominating Committee:

Teresa Tester, Chairman  
1809 Taylor Avenue  
Fort Washington, MD 20744

Sylvia Shives  
17215 West Washington Street  
Hagerstown, MD 21740-5171

Sandy O'Hedy  
116 S. School Ln  
Smyrna, DE 19977

## Chesapeake District LWML Nominee Form for 2018 Election

The District Nominating Committee is looking for assistance in preparing the slate of officers for the election taking place at the 2018 district convention. The following offices are to be filled:

**President, Vice President - Communications, VP Human Care, Recording Secretary, Financial Secretary, Zone Liaison, and Junior Pastoral Counselor.**



Each office is for a four-year term and an individual is not eligible to be re-elected to the same office. Requirements for nominees are: at least two years experience as a society or zone officer; they should be actively involved in the work of their society, women's ministry, or zone at the time of nomination for district office.

The Pastoral Counselor is elected for a four-year term and may not be reelected to a consecutive term.

**Please return this form no later than March 1, 2018** to the nominating committee at one of the addresses below. You may phone or preferably email us if you have questions. In email correspondence, please use LWML preceding the subject on the subject line.

---

The following name is submitted for consideration:

Name \_\_\_\_\_ Phone \_\_\_\_\_ Email \_\_\_\_\_

Address \_\_\_\_\_

For the position of \_\_\_\_\_

*(More than one position may be listed.)*

List the individual's service to LWML:

Signature \_\_\_\_\_ Phone \_\_\_\_\_ Email \_\_\_\_\_

*(Person submitting the name.)*

*Form may be copied to submit additional names.*

Teresa Tester, Chairman  
1809 Taylor Avenue  
Fort Washington, MD 20744  
ttester9612@verizon.net

Sylvia Shives  
17215 West Washington Street  
Hagerstown, MD 21740-5171  
Sylvia.shives@myactv.net

Sandy O'Hedy  
116 S. School Ln  
Smyrna, DE 19977  
s.ohedy116@comcast.net